

INTRINSIX



ASTRAL

BLUETOOTH LED TROFFER RETROFIT

# ASTRAL

## LED TROFFER RETROFIT



### Description

With an integrated PIR Sensor, the IntrinsiX ASTRAL LED Troffer Retrofit offers options for Bluetooth mesh system or occupancy, with both having daylight harvesting.

The IntrinsiX ASTRAL allows for easy installation using existing housing of most 2'x4' or 2'x2' fixtures.

With the two different integrated sensor (Bluetooth NLC or Occupancy PIR), you are saving money with an upgrade of existing instead of changing the whole fixture.

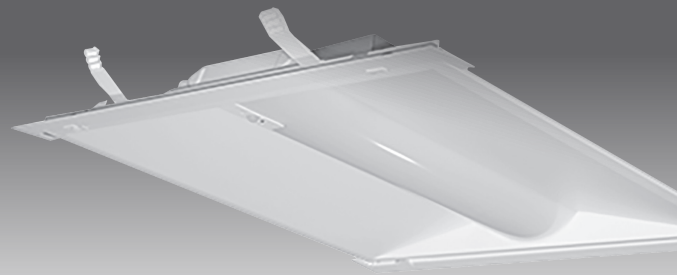
### Specifications

- CCT: 3500K/4000K/5000K
- Dimming: 0-10V
- Voltage: 120-277V
- Efficacy: 130Lm/W
- Operating temp: -4°F to 122°F
- IP Rating: IP20
- Power factor: <0.90
- Warranty: 50,000 hours/5 years

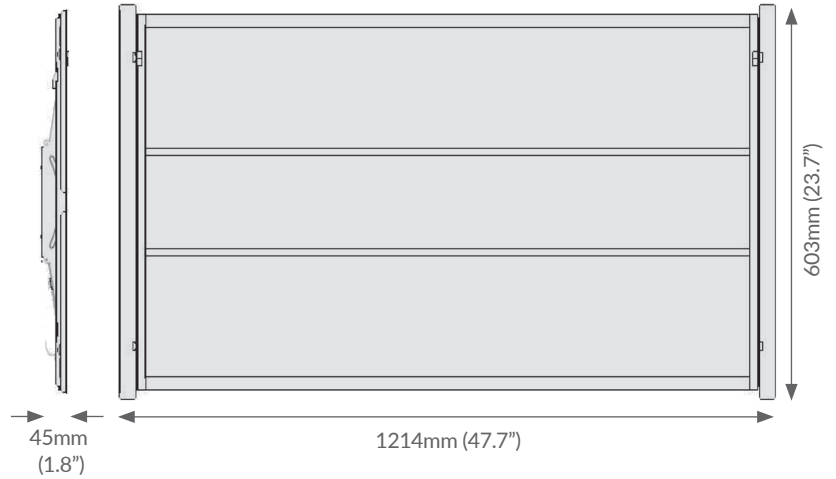
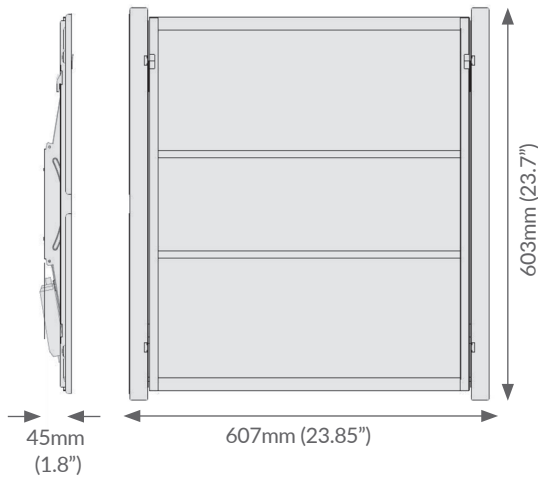
### Retrofit Troffer Fixture Details

Product Number	Size	Watts (Selectable)	CCT(K) (Selectable)	CRI	Efficacy (Lm/W)	Lumen Output Temperature (Lm)	Operating Temperature	IP	Bluetooth Mesh Capable	DLC Code
IX-TRS-NLC-22-24/36-35/40/50L0	2' x 2'	24/30/36	3500/4000/5000	>83	130	3120/4680	-4°F to 122°F	IP20	Yes	S-BYJAUS
IX-TRS-NLC-24-36/42/50-35/40/50L0	2' x 4'	24/36/45	3500/4000/5000	>83	130	4680/5460/6500	-4°F to 122°F	IP20	Yes	S-G75PBL
IX-TRS-PIR-22-24/36-35/40/50L0	2' x 2'	24/30/36	3500/4000/5000	>83	130	3120/4680	-4°F to 122°F	IP20	No	S-E7LJMP
IX-TRS-PIR-24-36/42/50-35/40/50L0	2' x 4'	24/36/45	3500/4000/5000	>83	130	4680/5460/6500	-4°F to 122°F	IP20	No	S-X8PG9R





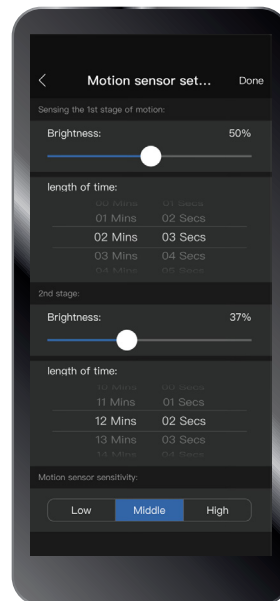
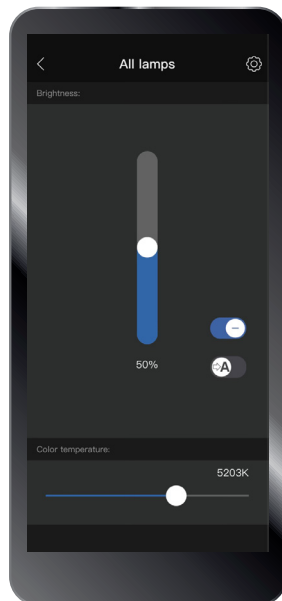
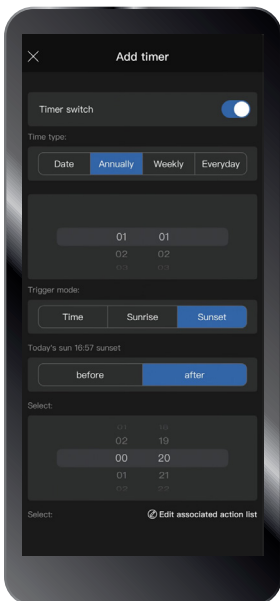
## LED Troffer Retrofit dimensions



## Package information

ITEM	CARTON SIZE(mm)	Qty	G.W./CTN	PCS/Pallet	20'GP	40'GP	40'HC
2x2FT	L64*W67.5*H11	2pcs/ctn	7.2KG	132pcs	960pcs	2160pcs	2376pcs
2x4FT	L130*W66*H10	2pcs/ctn	13.5KG	60pcs	480pcs	1080pcs	1224pcs

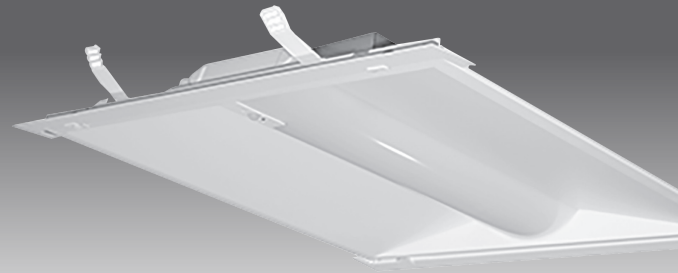
## Smartphone App



- Dimming & CCT tunable
- Timer
- Sensor Control
- Single Light Control
- Scene Control
- Group Control
- Zone Control
- Clock Function
- Electricity Stats
- Visualized Commissioning
- Emergency Lamp Test
- Independent Smart Sensor

# ASTRAL

## BLUETOOTH CONTROL WITH PIR SENSOR /LED TROFFER RETROFIT



### Sensor Control

#### Key features

- High sensitivity PIR motion sensor
- Constant illumination sensor
- 2-Ch PWM (3.3V) dimming signal output brightness/CCT dimmable
- Relay signal output - for relay control to turn on/off lights or circuit
- DC 3.3 V power supply
- Optimized dimming algorithm - self-study auto calibration
- Multiple driver adaption
- With housing reference design - to better adapt to various fixtures

#### Specifications

Model	107-006511-chl/107-0064 (2-ch)
Description	Strip BlueTooth / Smart Module / Daylight sensor with Motion sensor
Input voltage	3.3V
Operating current	1-ch 25mA/2-ch 33mA
Output	1-ch PWM (3.3V) Dimming 2-ch PWM (3.3V) Dimming and CCT tunable
Communication protocol	Bluetooth Mesh
Communication frequency	2405-2480MHz
Photosensitive range	10-1000Lux
Working temperature	-33°C to 80°C
Barrier-free communication distance	100M
PIR sensing range	φ 8 M @ H8 M / 360°

